



63/8 Rundle Street Kent Town SA

2 1 1

Best Offer By 8th December, Unless Sold Prior
 Comparable Sales Information Available on Request

City Realty is proud to present this immaculate apartment on the doorstep of the booming Kent Town precinct and East End Garden belt of the Adelaide City Centre.

Nestled at the rear of the Brewery complex in a small group of six units, this home is ideal for investors, owner occupiers and lock up and leave buyers that want the full convenience that Kent Town, the City and Norwood have to offer, with the benefit of a pool, gym, and sauna!

As come through the entrance passageway and into the open plan kitchen and dining/lounge you will be greeted by an abundance of natural light thanks to its north-west aspect, flanked by gorgeous Plantation Shutters which

Price : \$ 510,000
Building Size : 80 sqm
View : <https://www.cityrealty.com.au/sale/sa/ea-stern-suburbs/kent-town/residential/apartment/6748751>



Cameron Garry
 08 8212 5899



C|R

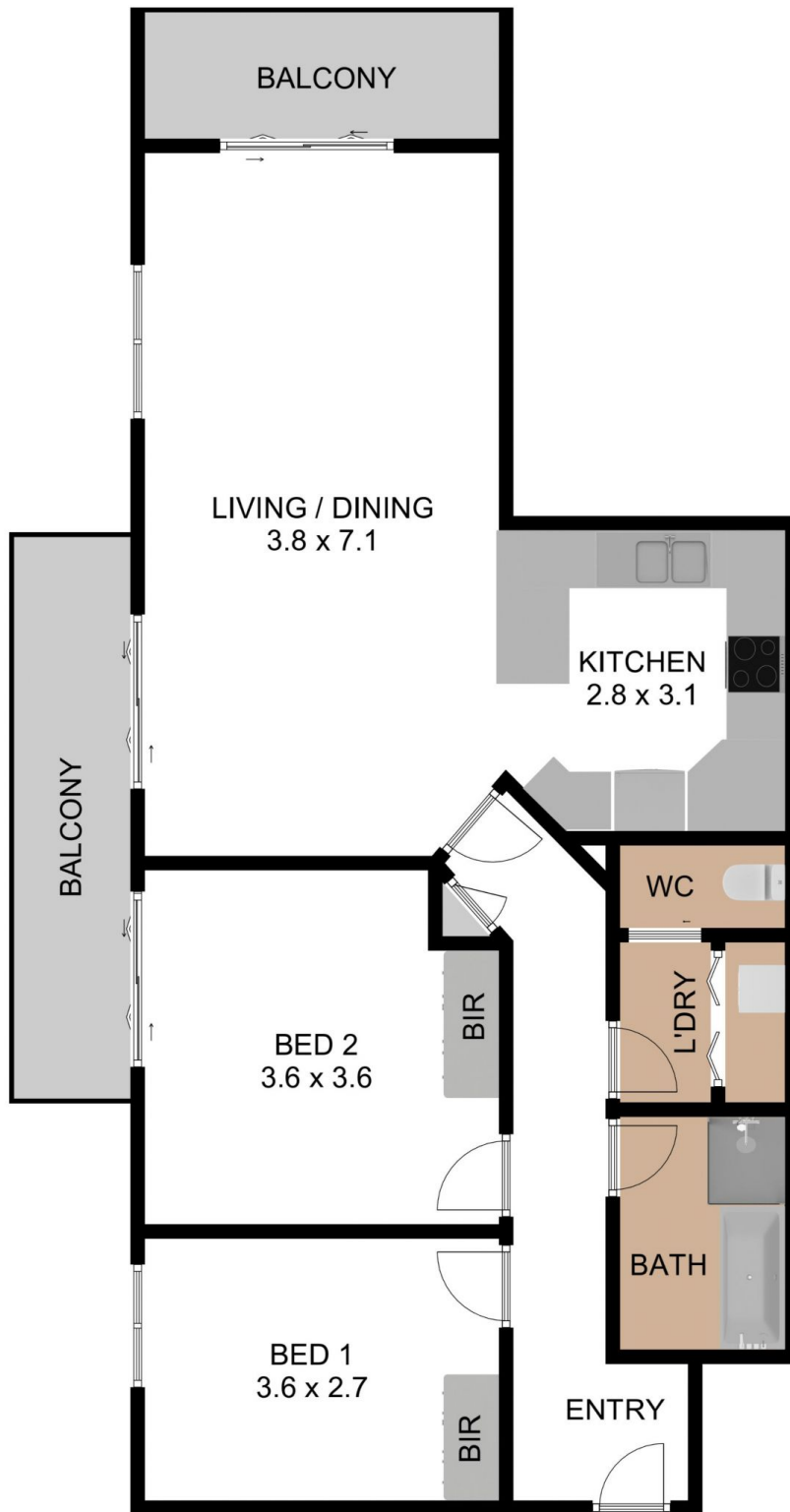
63/8 RUNDLE STREET, KENT TOWN, SA 5067

80.80 M²
INTERNAL LIVING

11.80 M²
BALCONY

92.60 M²
GRAND TOTAL

THE FLOOR PLAN IS FOR ILLUSTRATION PURPOSE ONLY. MEASUREMENTS ARE APPROXIMATE AND INTERNAL. NOT TO SCALE © BRG



C|R

63/8 RUNDLE STREET, KENT TOWN, SA 5067

80.80 M²
INTERNAL LIVING

11.80 M²
BALCONY

92.60 M²
GRAND TOTAL

THE FLOOR PLAN IS FOR ILLUSTRATION PURPOSE ONLY. MEASUREMENTS ARE APPROXIMATE AND INTERNAL. NOT TO SCALE © BRG